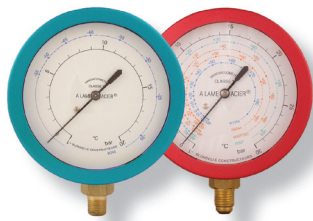


# Blondelle Manovacuumètre; Ø 80, composite



- Classe 1
- 'A Lame Acier': mécanisme à soufflet très haute performance/résistance
- Toutes combinaisons de fluides possible
- Chaque manomètre est étalonné et testé individuellement
- Boîtier composite très haute résistance, moulé par injection
  
- Surcharge admissible: 200%
- Remise à zéro facile
- Sec ou bain d'huile
- Prise arrière ou prise verticale
- Raccord 1/4"SAE ou 1/8"NPT

| BASSE Pression<br>Version | Sortie    | Raccord  | Référence  |         | Pression |     | Fluides frigorigènes        |
|---------------------------|-----------|----------|------------|---------|----------|-----|-----------------------------|
|                           |           |          | Boîtier    | Cadran  | psi      | bar |                             |
| Sec                       | Verticale | 1/4" SAE | MA0603V14S |         |          |     |                             |
|                           |           | 1/4" GAZ | MA0603V14G |         |          |     |                             |
|                           |           | 1/8" NPT | MA0603V18B |         |          |     |                             |
| Bain d'huile              | Arrière   | 1/4" SAE | MA0603A14S |         |          |     |                             |
|                           |           | 1/4" GAZ | MA0603A14G |         |          |     |                             |
|                           |           | 1/8" NPT | MA0603A18B |         |          |     |                             |
|                           | Verticale | 1/4" SAE | MA1003V14S |         |          |     |                             |
|                           |           | 1/4" GAZ | MA1003V14G |         |          |     |                             |
|                           |           | 1/8" NPT | MA1003V18B |         |          |     |                             |
| Anti-pulse                | Arrière   | 1/4" SAE | MA0901A14S |         |          |     |                             |
|                           |           | 1/4" GAZ | MA0901A14G |         |          |     |                             |
|                           |           | 1/8" NPT | MA0901A18B |         |          |     |                             |
|                           | Verticale | 1/4" SAE | MA0901V14S |         |          |     |                             |
|                           |           | 1/4" GAZ | MA0901V14G |         |          |     |                             |
|                           |           | 1/8" NPT | MA0901V18B |         |          |     |                             |
|                           |           | 1/4" SAE | MA0901A14S |         |          |     |                             |
|                           |           | 1/4" GAZ | MA0901A14G |         |          |     |                             |
|                           |           | 1/8" NPT | MA0901A18B |         |          |     |                             |
|                           |           |          | 1051       |         |          |     | R507+R404A+R407C Vap.Liq.   |
|                           |           |          | 1055       |         |          |     | R22+R417 Vap. Liq.          |
|                           |           |          | 1057       | -30+400 |          |     | R22+R410A (°F)              |
|                           |           |          | 1065       |         |          |     | R744                        |
|                           |           |          | 1067       |         |          |     | R1270                       |
|                           |           |          | 1073       |         |          |     | R410A+R22+R134a+R407C       |
|                           |           |          | 1085       |         |          |     | R134a+R404A+R410A+R22       |
|                           |           |          | 1087       |         |          |     | R407C Vap.Liq.+R410A+R22    |
|                           |           |          | 1099       |         |          |     | R744 (Trans-critique)       |
|                           |           |          | 1173       |         |          |     | R410A+R407C+R404A+R134a     |
|                           |           |          | 4090       |         |          |     | R409A Vap. Liq.             |
|                           |           |          | 4092       |         |          |     | R134a+R22+R409A Vap. Liq.   |
|                           |           |          | 5941       | -30+140 |          |     | R12+R22+R502                |
|                           |           |          | 6072       |         |          |     | R12+R22+R502                |
|                           |           |          | 6127       | -30+140 |          |     | R22+R134a                   |
|                           |           |          | 6172       |         |          |     | R134a                       |
|                           |           |          | 6187       |         |          |     | R22+R134a                   |
|                           |           |          | 6607       | -30+140 |          |     | R134a                       |
|                           |           |          | 6630       |         |          |     | R134a+R404A                 |
|                           |           |          | 6704       | -30+140 |          |     | R134a+R404A                 |
|                           |           |          | 7130       | -30+140 |          |     | R290+R600A                  |
|                           |           |          | 7279       |         |          |     | R23                         |
|                           |           |          | 7309       |         |          |     | R134a+R404A+R507+R407C      |
|                           |           |          | 7312       |         |          |     | R134a+R22+R404A             |
|                           |           |          | 7314       | -30+140 |          |     | R134a+R22+R404A             |
|                           |           |          | 7341       |         |          |     | R134a+R404A+R22+R407C       |
|                           |           |          | 7524       |         |          |     | R410A                       |
|                           |           |          | 7526       |         |          |     | R134a+R404A+R407C Vap. Liq. |
|                           |           |          | 7528       |         |          |     | R600A+Care 30 Vap.Liq.      |
|                           |           |          | 7530       |         |          |     | R290+Care 50 Vap.Liq.       |
|                           |           |          | 7542       |         |          |     | R134a+R22+R407C Vap. Liq.   |
|                           |           |          | 7554       |         |          |     | R134a+R22+R404A+R507        |
|                           |           |          | 7734       |         |          |     | R22+R407C Vap. Liq.         |
|                           |           |          | 7805       | -30+145 |          |     | R22+R134a+R404A (°F)        |
|                           |           |          | 8101       | -30+145 |          |     | R12+R22+R502 (°F)           |
|                           |           |          | 8137       | -30+400 |          |     | R410A (°F)                  |
|                           |           |          | 8264       |         |          |     | R134a+R407C Vap. Liq.       |



| HAUTE Pression |           | Raccord   | Référence  |            | Pression                    |        | Fluides frigorigènes     |                           |  |
|----------------|-----------|-----------|------------|------------|-----------------------------|--------|--------------------------|---------------------------|--|
| Version        | Sortie    |           | Boîtier    | Cadran     | psi                         | bar    |                          |                           |  |
| Sec            | Verticale | 1/4" SAE  | MA0603V14S |            |                             |        |                          |                           |  |
|                |           | 1/4" GAZ  | MA0603V14G |            |                             |        |                          |                           |  |
|                |           | 1/8" NPT  | MA0603V18B |            |                             |        |                          |                           |  |
| Bain d'huile   | Arrière   | 1/4" SAE  | MA0603A14S |            |                             |        |                          |                           |  |
|                |           | 1/4" GAZ  | MA0603A14G |            |                             |        |                          |                           |  |
|                |           | 1/8" NPT  | MA0603A18B |            |                             |        |                          |                           |  |
|                | Verticale | 1/4" SAE  | MA1003V14S |            |                             |        |                          |                           |  |
|                |           | 1/4" GAZ  | MA1003V14G |            |                             |        |                          |                           |  |
|                |           | 1/8" NPT  | MA1003V18B |            |                             |        |                          |                           |  |
| Anti-pulse     | Arrière   | 1/4" SAE  | MA1003A14S |            |                             |        |                          |                           |  |
|                |           | 1/4" GAZ  | MA1003A14G |            |                             |        |                          |                           |  |
|                |           | 1/8" NPT  | MA1003A18B |            |                             |        |                          |                           |  |
|                |           | Verticale | 1/4" SAE   | MA0901V14S |                             |        |                          |                           |  |
|                |           |           | 1/4" GAZ   | MA0901V14G |                             |        |                          |                           |  |
|                |           |           | 1/8" NPT   | MA0901V18B |                             |        |                          |                           |  |
|                |           |           |            | 1/4" SAE   | MA0901A14S                  |        |                          |                           |  |
|                |           |           |            | 1/4" GAZ   | MA0901A14G                  |        |                          |                           |  |
|                |           |           |            | 1/8" NPT   | MA0901A18B                  |        |                          |                           |  |
|                |           |           |            | 1052       |                             |        | -1+30                    | R507+R404A+R407C Vap.Liq. |  |
|                |           |           |            | 1056       |                             |        | -1+30                    | R22+R417 Vap. Liq.        |  |
|                |           |           |            | 1058       | -30+800                     |        |                          | R22+R410A (°F)            |  |
|                |           | 1068      |            |            |                             | -1+30  | R1270                    |                           |  |
|                |           | 1072      |            |            |                             | -1+50  | R744                     |                           |  |
|                |           | 1074      |            |            |                             | -1+45  | R410A+R22+R134a+R407C    |                           |  |
|                |           | 1086      |            |            |                             | -1+45  | R134a+R404A+R410A+R22    |                           |  |
|                |           | 1088      |            |            |                             | -1+45  | R407C Vap.Liq.+R410A+R22 |                           |  |
|                |           | 1100      |            |            |                             | -1+160 | R744 (Trans-critique)    |                           |  |
|                | 1174      |           |            | -1+45      | R410A+R407C+R404A+R134a     |        |                          |                           |  |
|                | 4091      |           |            | -1+30      | R409A Vap. Liq.             |        |                          |                           |  |
|                | 4093      |           |            | -1+30      | R134a+R22+R409A Vap. Liq.   |        |                          |                           |  |
|                | 5942      | -30+400   |            | -1+30      | R12+R22+R502                |        |                          |                           |  |
|                | 6073      |           |            | -1+30      | R12+R22+R502                |        |                          |                           |  |
|                | 6128      | -30+400   |            | -1+30      | R22+R134a                   |        |                          |                           |  |
|                | 6176      |           |            | -1+30      | R134a                       |        |                          |                           |  |
|                | 6189      |           |            | -1+30      | R22+R134a                   |        |                          |                           |  |
|                | 6608      | -30+400   |            | -1+30      | R134a                       |        |                          |                           |  |
|                | 6631      |           |            | -1+30      | R134a+R404A                 |        |                          |                           |  |
|                | 6705      | -30+400   |            | -1+30      | R134a+R404A                 |        |                          |                           |  |
|                | 7131      | -30+400   |            | -1+30      | R290+R600A                  |        |                          |                           |  |
|                | 7280      |           |            | -1+30      | R23                         |        |                          |                           |  |
|                | 7310      |           |            | -1+30      | R134a+R404A+R507+R407C      |        |                          |                           |  |
|                | 7313      |           |            | -1+30      | R134a+R22+R404A             |        |                          |                           |  |
|                | 7315      | -30+400   |            | -1+30      | R134a+R22+R404A             |        |                          |                           |  |
|                | 7342      |           |            | -1+30      | R134a+R404A+R22+R407C       |        |                          |                           |  |
|                | 7527      |           |            | -1+30      | R134a+R404A+R407C Vap. Liq. |        |                          |                           |  |
|                | 7529      |           |            | -1+16      | R600A+Care 30 Vap.Liq.      |        |                          |                           |  |
|                | 7531      |           |            | -1+30      | R290+Care 50 Vap.Liq.       |        |                          |                           |  |
|                | 7543      |           |            | -1+30      | R134a+R22+R407C Vap. Liq.   |        |                          |                           |  |
|                | 7555      |           |            | -1+30      | R134a+R22+R404A+R507        |        |                          |                           |  |
|                | 7735      |           |            | -1+30      | R22+R407C Vap. Liq.         |        |                          |                           |  |
|                | 7806      | -30+435   |            |            | R22+R13a+R404A (°F)         |        |                          |                           |  |
|                | 7808      |           |            | -1+45      | R410A                       |        |                          |                           |  |
|                | 8102      | -30+435   |            |            | R12+R22+R502 (°F)           |        |                          |                           |  |
|                | 8138      | -30+800   |            |            | R410A (°F)                  |        |                          |                           |  |
|                | 8265      |           |            | -1+30      | R134a+R407C Vap. Liq.       |        |                          |                           |  |

| Version      | Sortie    | Raccord  | Référence  |            | Pression |       | Fluides frigorigènes |  |
|--------------|-----------|----------|------------|------------|----------|-------|----------------------|--|
|              |           |          | Boîtier    | Cadran     | psi      | bar   |                      |  |
| Bain d'huile | Verticale | 1/4" SAE | MA0503V14S |            |          |       |                      |  |
|              |           | 1/8" NPT | MA0503V18B |            |          |       |                      |  |
|              |           | Arrière  | 1/4" SAE   | MA0503A14S |          |       |                      |  |
|              |           |          | 1/8" NPT   | MA0503A18B |          |       |                      |  |
|              |           |          |            | 6364       |          | -1+16 |                      |  |
|              |           |          |            | 8010       |          | -1+10 |                      |  |
|              |           |          |            | 8030       |          | -1+30 |                      |  |

Comment lire ce tableau?

La désignation complète d'un manovacuomètre se compose de la référence du boîtier suivi de la référence du cadran.

Ex.: Manovacuomètre diamètre 80mm composite, bain d'huile, sortie Verticale, 1/8"NPT, -1+45bar / R407C+R410A+R22: Boîtier: MA1003V18B; Cadran: 1088; Référence: MA1003V18B-1088