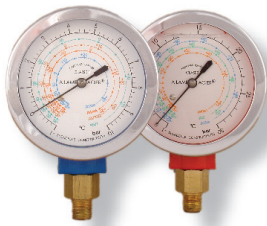


## Blondelle Pressure Gauge, Ø60, aluminium



- Class 1
- 'A Lame Acier' unique bellow mechanism, the highest durability and accuracy
- All combinations of refrigerants possible
- Each gauge calibrated individually
- Aluminium case
  
- Admissible overload: 200%
- Possibility to adjust the needle
- Dry or oil filled
- Outlet: vertical or rear
- Fitting: 1/4" SAE or 1/8" NPT

Low Pressure		Reference		Pressure		Refrigerants		
Version	Outlet	Fitting	Case	Dial	psi		bar	
Dry	Vertical	1/4" SAE	MA0601V14S					
		1/8" NPT	MA0601V18B					
	Rear	1/4" SAE	MA0601A14S					
		1/8" NPT	MA0601A18B					
Oil filled	Vertical	1/4" SAE	MA1001V14S					
		1/8" NPT	MA1001V18B					
		Rear	1/4" SAE	MA1001A14S				
			1/8" NPT	MA1001A18B				
				1001		-1+10	R507+R404A+R407C Vap. Liq.	
				1003		-1+10	R404A+R407C Vap.+R134a	
			1005		-1+10	R134a+R407C Vap. Liq.		
			1015		-1+30	R744		
			1017		-30+290	-1+20	R410A	
			1031			-1+20	R407C Vap.Liq.+R410A	
			1035			-1+20	R134a+R404A+R410A+R22	
			1037			-1+20	R407C+Vap.Liq.+R410A+R22	
			1115			-1+10	R134a+R404A+R407C Vap.Liq.	
			1123			-1+20	R134a+R404A+R407C+R410A	
			5992		-30+140	-1+10	R12+R22+R502	
			6060		-30+140	-1+10	R134a	
			6070			-1+10	R12+R22+R502	
			6125		-30+140	-1+10	R22+R134a	
			6171			-1+10	R134a	
			6186			-1+10	R22+R134a	
			6685			-1+10	R134a+R404A	
			6702		-30+140	-1+10	R134a+R404A	
			7074			-1+10	R22+R134a+R404A	
			7076		-30+140	-1+10	R22+R134a+R404A	
			7126		-30+140	-1+10	R290+R600A	
			7216			-1+10	R134a+R404A+R507+R407C	
			7272			-1+10	R22+R134a+R407C	
			7290			-1+10	R23	
		7345			-1+10	R134a+R404A+R22+R407C		
		7366			-1+10	R407C Vap. Liq.		
		7496			-1+10	R507+R407C		
		7540			-1+10	R134a+R22+R407C Vap. Liq.		
		7552			-1+10	R134a+R22+R404A+R507		
		8006			-1+20	R410A		



High Pressure		Fitting	Reference		Pressure		Refrigerants	
Version	Outlet		Case	Dial	psi	bar		
Dry	Vertical	1/4" SAE	MA0601V14S					
		1/8" NPT	MA0601V18B					
Oil filled	Rear	1/4" SAE	MA0601A14S					
		1/8" NPT	MA0601A18B					
	Vertical	1/4" SAE	MA1001V14S					
		1/8" NPT	MA1001V18B					
		1/4" SAE	MA1001A14S					
		1/8" NPT	MA1001A18B					
					1002	-30+650	-1+30	R507+R404A+R407C Vap. Liq.
					1004		-1+30	R404A+R407C Vap.+R134a
					1006		-1+30	R134a+R407C Vap. Liq.
					1018		-1+45	R410A
			1029		-1+50	R744		
			1032		-1+45	R407C Vap.Liq.+R410A		
			1036		-1+45	R134a+R404A+R410A+R22		
			1038		-1+45	R407C+Vap.Liq.+R410A+R22		
			1116		-1+30	R134a+R404A+R407C Vap.Liq.		
			1124		-1+45	R134a+R404A+R407C+R410A		
			5993	-30+400	-1+30	R12+R22+R502		
			6061	-30+400	-1+30	R134a		
			6071		-1+30	R12+R22+R502		
			6126	-30+400	-1+30	R22+R134a		
			6175		-1+30	R134a		
			6188		-1+30	R22+R134a		
			6686		-1+30	R134a+R404A		
			6703	-30+400	-1+30	R134a+R404A		
			7075		-1+30	R22+R134a+R404A		
			7077	-30+400	-1+30	R22+R134a+R404A		
			7127	-30+400	-1+30	R290+R600A		
			7217		-1+30	R134a+R404A+R507+R407C		
			7273		-1+30	R22+R134a+R407C		
			7291		-1+30	R23		
			7346		-1+30	R134a+R404A+R22+R407C		
			7367		-1+30	R407C Vap. Liq.		
			7497		-1+30	R507+R407C		
			7541		-1+30	R134a+R22+R407C Vap. Liq.		
			7553		-1+30	R134a+R22+R404A+R507		
			8007		-1+45	R410A		

Version	Outlet	Fitting	Reference		Pressure		Refrigerant
			Case	Dial	psi	bar	
Oil filled	Vertical	1/4" SAE	MA0501V14S				
		1/8" NPT	MA0501V18B				
	Rear	1/4" SAE	MA0501A14S				
		1/8" NPT	MA0501A18B				
				6355		-1+16	

How to read the tables?  
 The complete designation of a pressure gauge comprises the reference of the casing, followed by the reference of the dial.  
 Ex: Pressure gauge diameter 60mm aluminium, oil filled, rear outlet, 1/4"SAE, -1+10bar / R22+R134a+R407C:  
 Case: MA1001A14S; Dial: 7272; Reference: MA1001A14S-7272